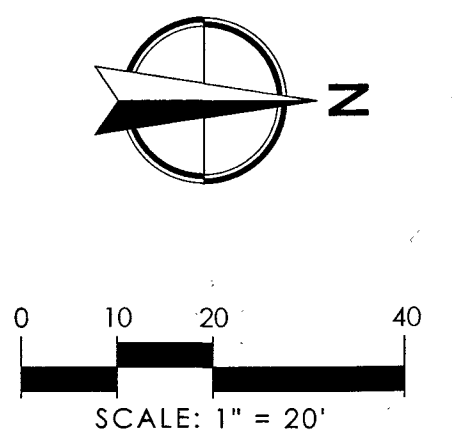
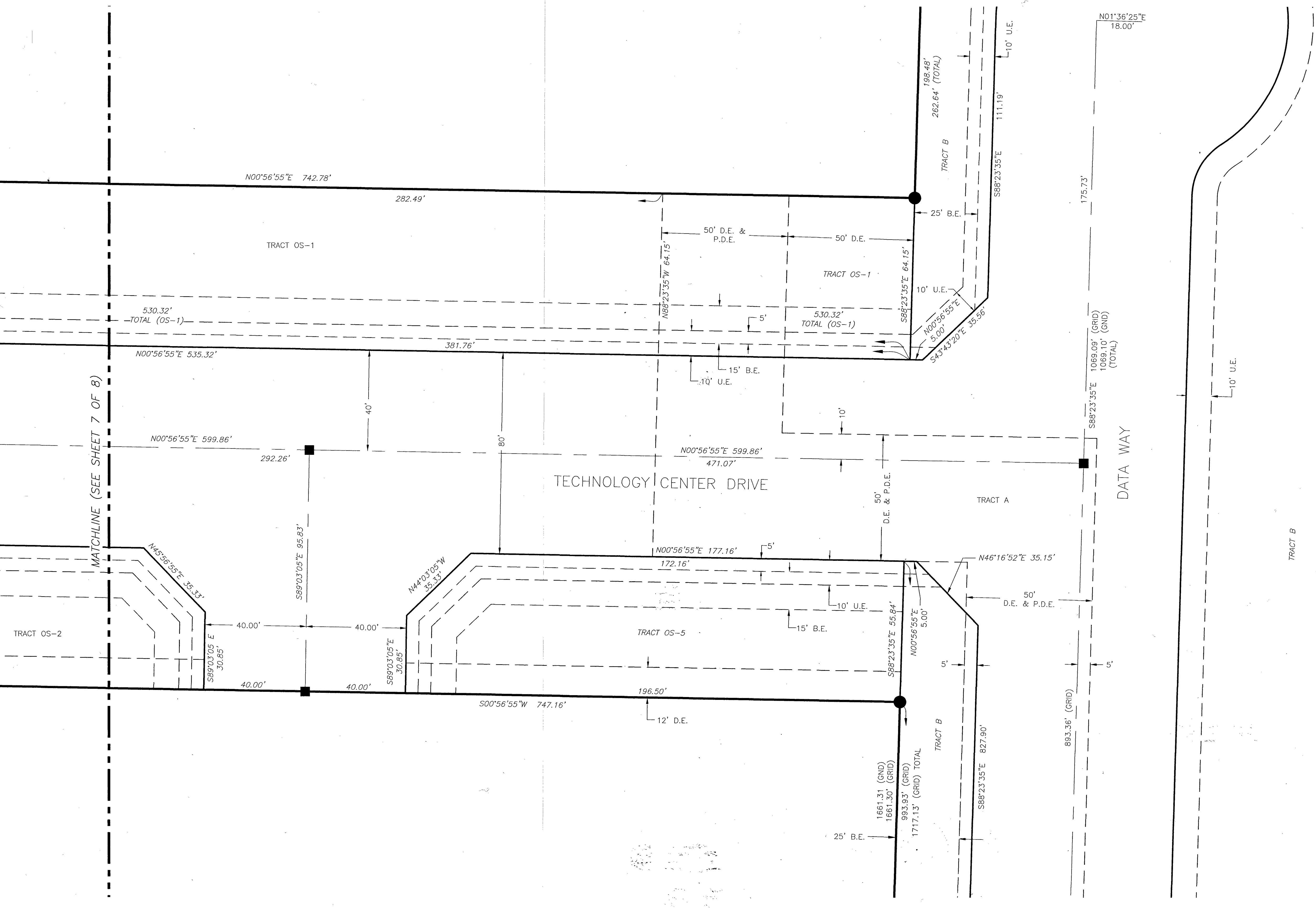


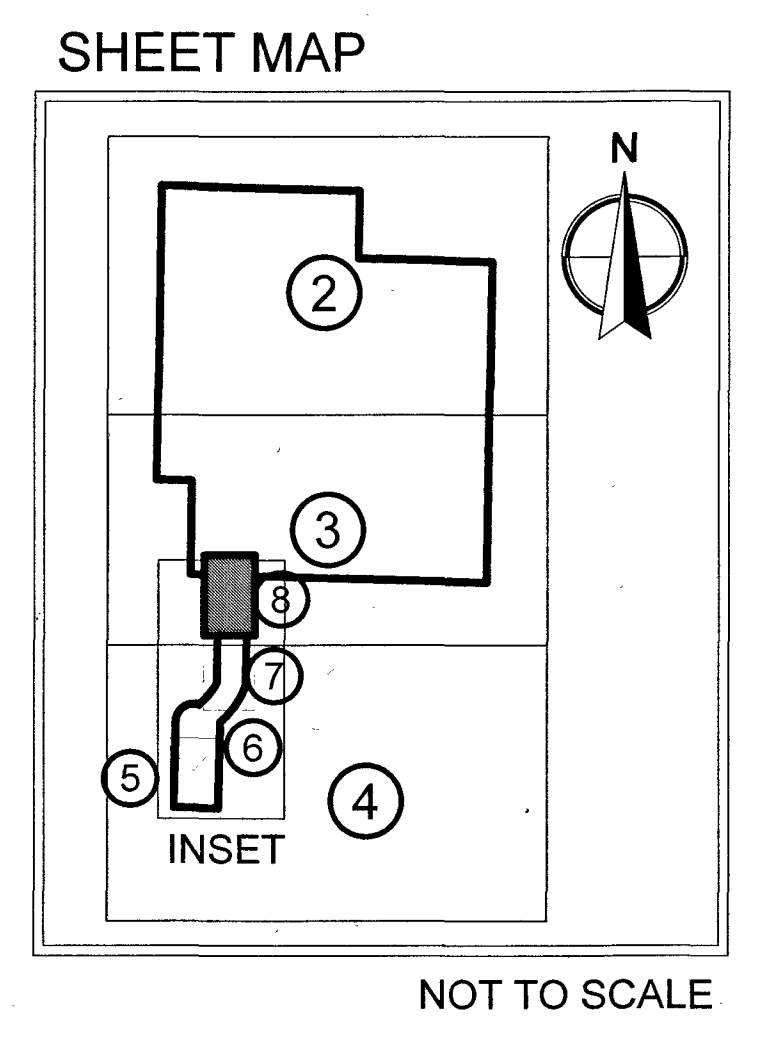
# CENTRAL PARK COMMERCE CENTER MUPD

BEING A PORTION OF SECTIONS 29 & 32, TOWNSHIP 43S, RANGE 40E  
PALM BEACH COUNTY, FLORIDA

- LEGEND:**
- B.E. = BUFFER EASEMENT
  - CL = Center Line
  - CB = CHORD BEARING
  - CD = CHORD DISTANCE
  - CCR = CERTIFIED CORNER RECORD
  - Conc. = Concrete
  - Δ = Delta (Central Angle)
  - DB = DEED BOOK
  - D.E. = Drainage Easement
  - FDOT = FLORIDA DEPARTMENT OF TRANSPORTATION
  - FP&L = Florida Power & Light
  - Fnd. = Found
  - GND = Ground
  - L = Length of Arc
  - LB = Licensed Surveying Business
  - LMAE = Lake Maintenance Access Easement
  - MTE = Mass Transit Easement
  - NAD = North American Datum
  - NT = Non-Tangent
  - ORB = Official Records Book



- LEGEND:**
- Pg. = Page
  - P.B.C.R. = Palm Beach County Records
  - PCP = PERMANENT CONTROL POINTS
  - P.D.E. = PUBLIC DRAINAGE EASEMENT
  - P.O.B. = POINT OF BEGINNING
  - P.O.C. = POINT OF COMMENCEMENT
  - PRM = Permanent Reference Monument
  - PSM = Professional Surveyor & Mapper
  - PB = Plat Book
  - PC = Point of Curvature
  - PRC = Point of Reverse Curvature
  - PT = Point of Tangency
  - R = Radius
  - RW = Right-of-Way
  - SF = SQUARE FEET
  - SFWMWD = SOUTH FLORIDA WATER MANAGEMENT DISTRICT
  - U.E. = Utility Easement
  - W/ = With
  - = SET 5/8" IRON ROD & ALUMINUM CAP STAMPED "LB 7055 PRM"
  - = SET PCP BEING A NAIL AND DISK STAMPED "LB 7055 PCP"



SHEET 8 OF 8

THIS INSTRUMENT WAS  
PREPARED BY JIM SULLIVAN

2035 Vista Parkway, West Palm Beach, FL 33411  
Phone No. 866.909.2220 www.wginc.com  
Cert No. 6091 - LB No. 7055